

Sub-Station Information

BREB CAPACITY

SL	Description	June/22 (Dem-8,606 MW)		OPTIMUM USED (Supply 8,606 MW)
		Total (Nos)	Capacity (%)	
1	33 kv Feeder (MW)	711	17775 (206%)	48%
2	33/11 kv S/S (MVA)	1279	17210 (200%)	50%
3	11 kv Feeder (MW)	5756	20146 (234%)	43%
4	Dist X-former (MW)	14,22,445	18458 (215%)	47%

Target & Achievement: 2021-22

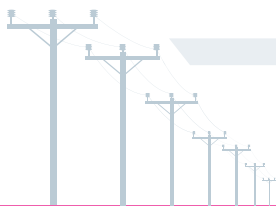
SL	Details	Target	Achievement	(%)
1	New Connection	-	-	-
2	Line Construction	-	-	-
3	Sub-station	2050 MVA	2165 MVA	105%
4	System Loss	-	-	-

Implementation Program

SL	Details	Up-to-June'22	2030	2041
1	Line (Km)	-	5,12,000	6,00,000
2	S/S (MVA)	17210	30,750	55,000
3	Consumers (Core)	-	-	-
4	Demand (MW)	8606	15,145	36,000

BREB 33/11kv Sub-station Information

Dhaka Division			
Sl. No.	Name of PBS	No. of Sub-station	Capacity (MVA)
1	Dhaka-1	35	570
2	Dhaka-2	9	180
3	Dhaka-3	23	440
4	Dhaka-4	23	400
5	Narsingdi-1	30	320
6	Narsingdi-2	23	335
7	Manikgonj	36	450
8	Munshigonj	25	410





Sl. No.	Name of PBS	No. of Sub-station	Capacity (MVA)
9	Narayangonj-1	36	480
10	Narayangonj-2	18	325
11	Gazipur-1	41	605
12	Gazipur-2	14	280
13	Tangail	33	380
14	Gopalganj	13	170
15	Faridpur	18	230
16	Rajbari	9	95
17	Madaripur	16	180
18	Shariatpur	14	160
Sub-Total		416	6010

Chittagong Division

Sl. No.	Name of PBS	No. of Sub-station	Capacity (MVA)
1	Chittgong-1	20	245
2	Chittgong-2	16	180
3	Chittgong-3	15	270
4	Feni	15	250
5	Comilla-1	15	205
6	Comilla-2	17	290
7	Comilla-3	17	250
8	Comilla-4	6	135
9	Chandpur-1	7	120
10	Chandpur-2	9	150
11	Noakhali	21	250
12	Lakshmipur	12	190
13	Cox's Bazar	22	270
Sub-Total		192	2805

Khulna Division

Sl. No.	Name of PBS	No. of Sub-station	Capacity (MVA)
1	Kushtia	17	230
2	Meherpur	12	160
3	Jessore-1	20	270
4	Jessore-2	18	220



5	Jhenaidah	13	155
6	Magura	9	105
7	Satkhira	12	170
8	Bagerhat	14	170
9	Khulna	15	180
Sub-Total		130	1660

Rajshahi Division

Sl. No.	Name of PBS	No. of Sub-station	Capacity (MVA)
1	Rajshahi	12	155
2	Chapai Nawabgonj	13	165
3	Natore-1	12	140
4	Natore-2	10	160
5	Pabna-1	13	175
6	Pabna-2	10	170
7	Sirajgong-1	12	155
8	Sirajgong-2	11	165
9	Bogra-1	9	115
10	Bogra-2	9	130
11	Joypurhat	10	100
12	Naogaon-1	15	180
13	Naogaon-2	14	155
Sub-Total		150	1965

Mymensingh Division

Sl. No.	Name of PBS	No. of Sub-station	Capacity (MVA)
1	Maymensing-1	18	280
2	Maymensing-2	28	620
3	Maymensing-3	13	130
4	Jamalpur	17	240
5	Kishorgonj	13	150
6	Netrokona	14	180
7	Sherpur	10	100
Sub-Total		113	1700





Sylhet Division

Sl. No.	Name of PBS	No. of Sub-station	Capacity (MVA)
1	Sylhet-1	25	255
2	Sylhet-2	8	100
3	Moulvibazar	20	250
4	Hobigonj	29	305
5	Sunamgonj	11	120
6	B.Baria	14	165
Sub-Total		107	1195

Barisal Division

Sl. No.	Name of PBS	No. of Sub-station	Capacity (MVA)
1	Barisal-1	9	110
2	Barisal-2	12	130
3	Jhalokati	5	50
4	Pirojpur	13	150
5	Patuakhali	17	180
6	Bhola	13	150
Sub-Total		69	770

Rangpur Division

Sl. No.	Name of PBS	No. of Sub-station	Capacity (MVA)
1	Rangpur-1	14	140
2	Rangpur-2	12	135
3	Dinajpur-1	10	140
4	Dinajpur-2	11	120
5	Thakurgaon	18	190
6	Kuri-Lalmonirhat	15	150
7	Nilphamari	10	110
8	Gaibandha	12	120
Sub-Total		102	1105
Total		1279	17210

